



MSENGO CONSULTING

INTEGRATED ENGINEERING EXCELLENCE

COMPANY PROFILE





MSENGO CONSULTING



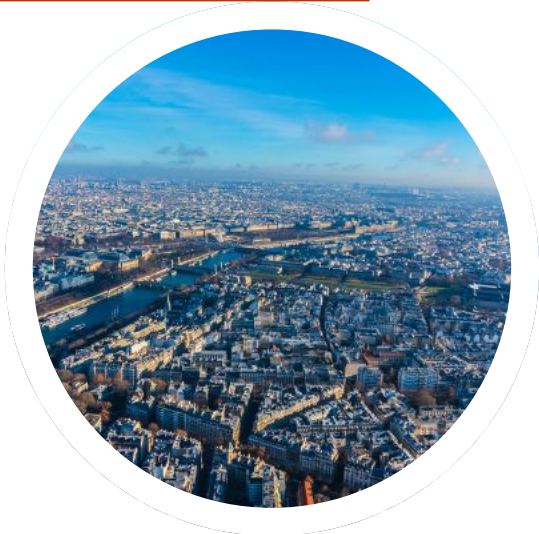
COMPANY OVERVIEW

Msengo Consulting is a premier South African, 100% black-owned multidisciplinary engineering and project management firm. We provide integrated, innovative, and sustainable solutions to complex challenges in the built environment. Our core expertise spans Civil, Electrical, and Mechanical Engineering, complemented by a robust Project Management offering that ensures seamless project delivery from conception to completion.

Serving both the public and private sectors, we are dedicated partners in the development of critical infrastructure and capital projects that drive economic growth and improve the quality of life for communities across the nation. Our approach is founded on technical excellence, unwavering integrity, and a client-centric philosophy that prioritizes value, efficiency, and long-term performance.



MSENGO CONSULTING



Vision

To be the most trusted and sought-after engineering partner in Southern Africa, recognized for our innovation, integrity, and commitment to delivering projects that create a sustainable and prosperous future.



Mission

To deliver exceptional, cost-effective engineering and project management solutions that exceed client expectations, empower communities, and adhere to the highest standards of safety and quality. We achieve this by leveraging our diverse technical expertise, fostering collaborative partnerships, and embracing technological advancements.



MSENGO CONSULTING



OUR SERVICES

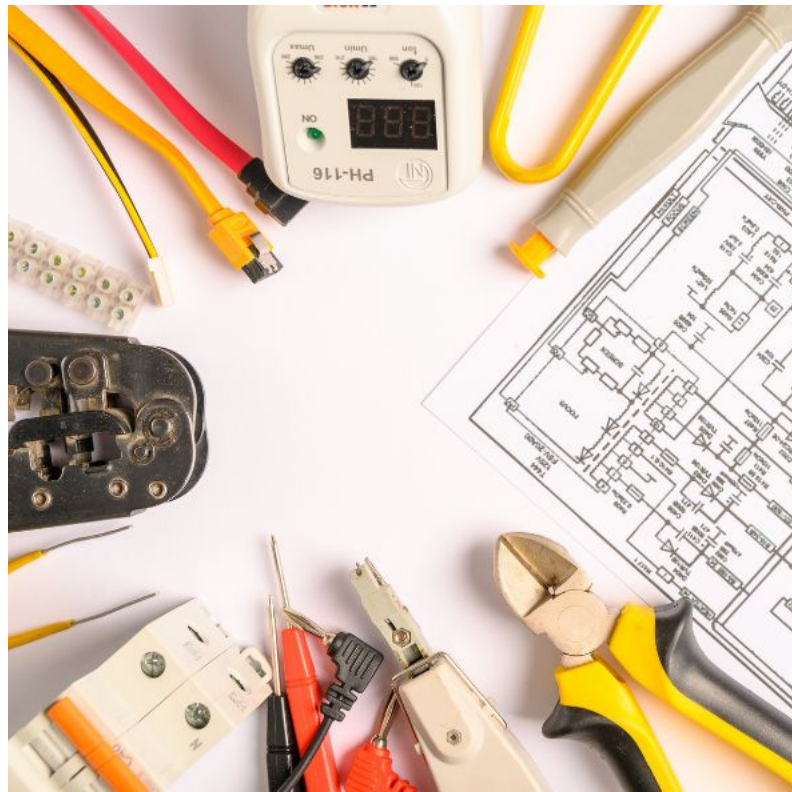


CIVIL ENGINEERING

Our civil engineering division provides planning, design, and supervision for critical infrastructure projects.

- **Water & Sanitation:** Bulk water supply, pipelines, reservoirs, wastewater treatment plants, and reticulation networks.
- **Transportation:** Urban and rural roads, stormwater management systems, and pavement engineering.
- **Structural Engineering:** Design and analysis of reinforced concrete and structural steel for commercial, industrial, and residential buildings.
- **Geotechnical Investigations:** Site assessments and foundation design recommendations.

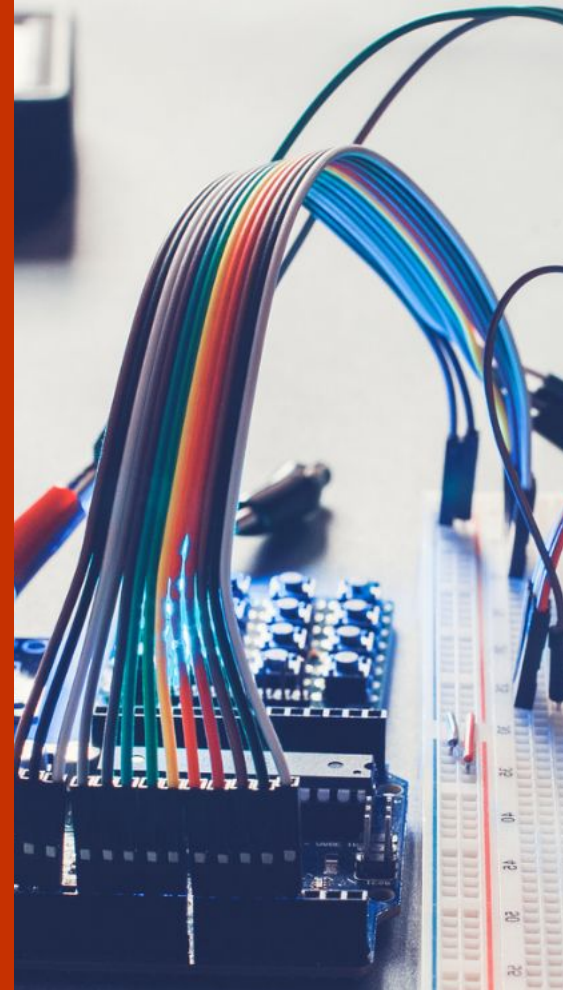


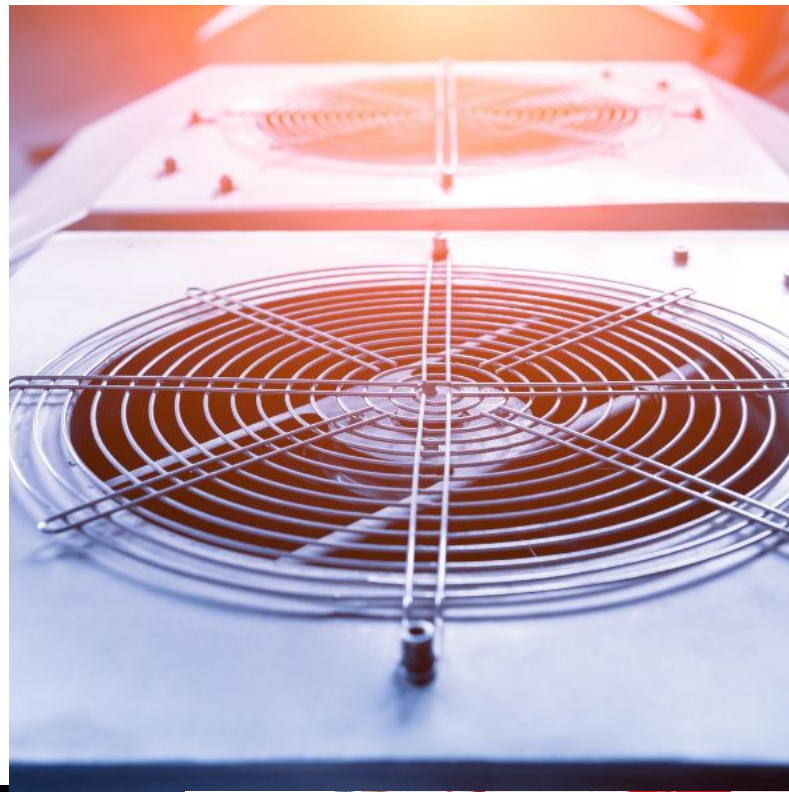


ELECTRICAL ENGINEERING

We specialize in the design and management of reliable and efficient electrical systems for a wide range of applications.

- **Power Distribution:** Medium Voltage (MV) and Low Voltage (LV) reticulation for townships, commercial, and industrial developments.
- **Building Services:** Lighting design, power layouts, emergency power supply (generators, UPS), and fire detection systems.
- **Renewable Energy:** Design and integration of solar PV systems and other sustainable energy solutions.
- **Instrumentation & Control:** System design for industrial processes, pump stations, and treatment works.





MECHANICAL ENGINEERING

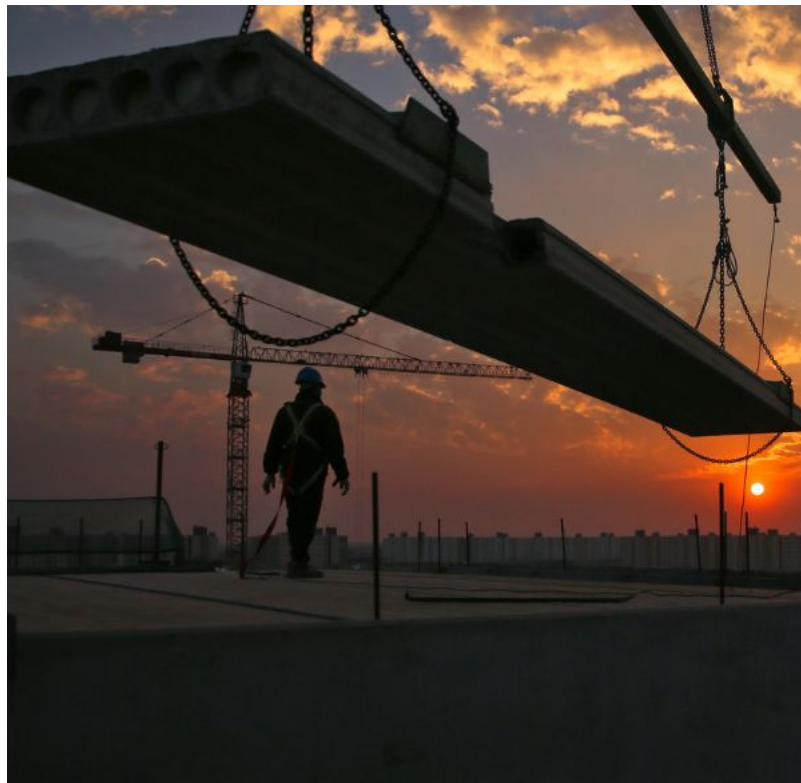
Our mechanical engineering services focus on performance, energy efficiency, and regulatory compliance.

- **HVAC:** Heating, Ventilation, and Air Conditioning systems for commercial and institutional buildings.
- **Fire Protection:** Rational fire design, sprinkler systems, and smoke ventilation solutions.
- **Wet Services:** Hot and cold water reticulation, plumbing, and drainage systems.
- **Pumping & Fluid Systems:** Design of pump stations, bulk fluid conveyance, and industrial piping.





MSENGO CONSULTING



PROJECT & CONSTRUCTION MANAGEMENT

Our project management services provide the leadership and strategic oversight needed to deliver projects on time, within budget, and to the specified quality standards.

- **Full Project Lifecycle Management:** From initiation and planning to execution, monitoring, and closure.
- **Scope, Time & Cost Management:** Detailed planning, scheduling (Gantt charts, Critical Path Method), and budget control.
- **Quality Assurance & Control:** Implementing robust QA/QC plans to ensure compliance with standards.
- **Risk Management:** Identification, analysis, and mitigation of project risks.
- **Stakeholder & Community Liaison:** Facilitating effective communication between all project participants.





WHAT GIVES OUR MSENGO CONSULTING THE COMPETITIVE EDGE?

- **Integrated Advantage:** Our multidisciplinary model provides a single point of contact, reducing coordination risks and improving project efficiency for our clients.
- **Professional Expertise:** Our team consists of highly qualified and experienced professionals registered with the Engineering Council of South Africa (ECSA) and the South African Council for the Project and Construction Management Professions (SACPCMP).
- **Client-Centric Approach:** We invest time in understanding our clients' unique needs to deliver tailored, practical, and cost-effective solutions.
- **Commitment to Transformation:** As a proud level 1 B-BBEE contributor, we are dedicated to the economic transformation of South Africa, prioritizing local procurement and skills development.
- **Proven Track Record:** We have a history of successfully delivering capital and operations projects for both government and blue-chip private clients.



Contact Us



011 568 7409



info@msengo.co.za



11 Coventry Park, 675 Old Pretoria Road,
Midrand, Gauteng



www.msengo.co.za



MSENGO CONSULTING
INTEGRATED ENGINEERING EXCELLENCE